



# Our Lady of Fatima

and Lisbon, Batalha and Nazaré

An 8-day Pilgrimage to Portugal

**December 7 to 14, 2009**



### 8-Day Trip Inclusions:

- Air transportation from Chicago to Lisbon (other U.S. cities available at an add-on price. Pilgrimage is also available on a land-only basis)
- Accommodations just steps away from the Shrine.
- Breakfasts each morning (except for first morning where breakfast is served on the plane)
- All dinners in Portugal
- Visits and tour admissions as listed on itinerary
- Spiritual program including Holy Mass daily (in unforgettable places), Meditations, Sacrament of Reconciliation, Eucharistic Adoration, Way of the Cross and more.
- Transportation on air conditioned motor-coach.
- Professional chauffeur throughout the tour.
- Tour Director **Juan Landa** from *Mater Dei Tours*
- **Fr. James Kubicki** as Spiritual Director.
- Hospitality, local government sales taxes & fees (except air taxes, government and ticket fees & fuel surcharges related to airfare – see below).
- Full travel documentation with luggage tags, in a re-usable travel wallet.

**Not included:** Tips & gratuities of Local City Tour Guides & Driver (read confirmation information for suggestions); Airfare taxes and ticketing fees and surcharges (approx. \$375).

**Only**

**\$1,699\***

\* plus airfare taxes, government and airport travel fees and fuel surcharges (approx. \$375). Price is per person in double occupancy. \$1,350 for land-only price.

See registration for more details.



**NOTE:** Although a motor-coach is included for tour transportation, it is important to point out that pilgrimages require a considerable amount of **walking**.

**INDEX:**

- Featured Visit /Stop
- Visit & Hotel Stay
- - - Airplane Travel
- ..... Motor-Coach Travel

*Celebrate two great Marian Feast Days in Fatima!*

*December 8th:  
Immaculate Conception*

*December 12th:  
Our Lady of Guadalupe*



Fr. James Kubicki, S. J.  
National Director

**APOSTLESHIP  
OF PRAYER**

# Relevant Journeys *Mater Dei Catholic Pilgrimage to Portugal*

Meals' Legend:  
 M = Airplane Meals  
 B = Breakfast  
 D = Dinner

## Day 1: Monday, December 7th, 2009: US departure:

Meet your Mater Dei Tours representative at Chicago's O'Hare Airport (*Flights are included from Chicago, Illinois. Contact us for air transportation add-on costs from other cities*). Board your flight to Madrid, Spain. (M)



## Day 2: Tuesday, December 8th, 2009 (Feast of the Immaculate Conception):

### Arrival in Lisbon:

Arrive in Madrid in the morning. After European Immigration, along with your Mater Dei Tour Director, connect to your flight to Lisbon. Arrive in Lisbon and travel this morning to one of the most famous Marian Shrines, the Shrine of Our Lady of Fatima. This is the famous site where Our Lady appeared to 3 little shepherds in 1917. After hotel check-in, celebrate Holy Mass for the Feast Day of the Immaculate Conception. Then join your fellow pilgrims for dinner at our hotel. Afterwards, join pilgrims from all over the world to pray the Holy Rosary at the Sanctuary grounds in a candle light procession. (M, D)

## Day 3: Wednesday, December 9th, 2009 (Feast of St. Juan Diego):

After breakfast, join us for an orientation walking tour of the Shrine's grounds, chapels and Basilica. Experience the amazing "Fatima, Light and Peace" exhibit reserved for our group, where you'll see the bullet that struck John Paul II at the assassination attempt of May 13, 1981 (Feast day of Our Lady of Fatima) in St. Peter's Square (Vatican). Gather at the Shrine's grounds for a meditation about Our Blessed Mother. Holy Mass at the Fatima Shrine today. Tonight, join your new pilgrim family for dinner and then come together to the Rosary Procession at the Capelinha. (B, D)



## Day 4: Thursday: December

### 10th, 2009: Fatima & Valinhos:

Each day you may want to spend the entire day at the Fatima Shrine with opportunities for Confession, Rosary, Way of the Cross, Adoration to the Blessed Sacrament and personal prayer, or you may want to join the group for an excursion. Today's excursion visits the site of the August 19th Marian Apparition as well as the apparition site of the Angel of Portugal. Also see the homes of Blessed Francisco and Blessed Jacinta (with a possibilities of meeting relatives), as well as the home of Lucia's family in Valinhos. Tour the Parish Church where the three visionaries were baptized. Stop at a Portuguese market for lunch (cost not included) and shopping. Holy Mass at the Shrine. Dinner tonight at the hotel. For those who wish to join, the Rosary Procession follows dinner. (B, D)



Apparition of the Angel of Portugal

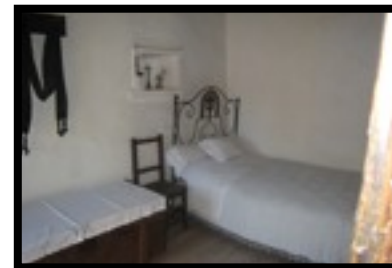
### Home of B. Jacinta & B. Francisco



Jacinta, Francisco & Lucia



Lucia's Home



**Day 5: Friday December 11th, 2009: Fatima:** After breakfast, walk to the starting point of the famous Way of the Cross (Via Crucis). Together we will pray the Way of the Cross as we walk through the same olive tree fields the little shepherds once walked. This trail ends at the beautiful Hungarian Crucifixion Chapel, a gift from the people of Hungary. Confession available today at the shrine, followed by Eucharistic adoration. Remainder of the day is at leisure for your personal prayer and reflection, or relaxation and shopping. This evening, enjoy another fabulous dinner at our hotel. (B, D)



Basilica of Fatima



Hungarian Chapel



Way of the Cross



[www.materdeitours.com](http://www.materdeitours.com)

Toll Free: 800 515-2632

# Relevant Journeys *Mater Dei Catholic Pilgrimage to Portugal*

Meals' Legend:  
 M = Airplane Meals  
 B = Breakfast  
 D = Dinner

## **Day 6: Saturday, December 12th, 2009 (Feast of Our Lady of Guadalupe): Batalha and Nazare:**

Start the day with a morning Mass at the shrine celebrating the great feast day of **Our Lady of Guadalupe**. A delicious breakfast follows the Mass.



Then enjoy the beautiful landscape on the way to **Batalha** to visit the **Santa Maria da Vitória (Holy Mary of Victory)**. This is the famous site where Portugal fought a decisive battle against the invading armies of Castile. The Portuguese

## **Holy Mary of Victory Monastery, Batalha**



attributed the victory of this **Battle of Aljubarrota** to Our Lady's intercession and dedicated the gorgeous Monastery Batalha in the same site where Portugal solidified its sovereignty. Afterwards, continue East towards the Atlantic coast of Portugal to a little fishing village with a beautiful church dedicated to **Our Lady of Nazareth**. A local story tells us about a monk who brought a black Madonna statue from Palestine to Merida, Spain. Later in the year 711, the statue was brought to this place. To commemorate the miraculous intervention of the Black Madonna in saving the life of a Templar in 1182, the Knight built her a chapel in



**Our Lady of Nazareth**

## **Coastal view of Nazare from Sitio**



thanksgiving. Because of the devotion King Fernando I, the **Igreja de Nossa Senhora da Nazare (Church of Our Lady of Nazareth)** was built in 1377. The Marian Shrine is situated on a section of the Nazare called Sitio, which is a great bluff over the Atlantic Ocean, with a fantastic panoramic view of the coast. Return to our hotel in Fatima

for dinner. Afterwards, join pilgrims from all over the world while we pray the Holy Rosary at the Sanctuary grounds in a **candle light procession**. (B, D)

### **Photo Credits:**

- ◆ Frank and Mary Ann Skutta
- ◆ Shrine of Our Lady of Fatima
- ◆ City of Nazare
- ◆ Batalha Monastery
- ◆ Church of St. Stephen, Santarem



**Famous cable cars of Lisbon**

## **Day 7: Sunday, December 13th, 2009:**

### **Santarem & Lisbon:**

Last morning in Fatima! After breakfast, travel to a small Portuguese town to witness the 13<sup>th</sup> century **Eucharistic Miracle of Santarem**. An



**Eucharistic Miracle of Santarem**

amazing story accompanies this old Eucharistic Miracle. **Mass** is celebrated here after **Eucharistic Adoration**. After our visit to quaint Santarem, relax and enjoy the ride with views of the Portuguese countryside as we approach **Lisboa (Lisbon)**, the Capital of Portugal. Enjoy a panoramic city tour including sites like **Jeronimos Monastery, Monument to the Navigators, St. Anthony of Padua's Birthplace and more**. After hotel check-in, join your new pilgrim family for our farewell dinner reminiscing of all the great moments spent together on pilgrimage. Our Priest will bless us and all our religious articles after dinner. (B, D)

### **Jeronimos Monastery**



## **Day 8: Monday, December 14<sup>th</sup>, 2009: Lisbon to Chicago, USA (B, M):**

Early morning transfer to **Lisbon Airport**. As our plane takes-off, take one last look out the window at the unique landscape of this beautiful land and say:

**Thank you Mary!**  
**Obrigado Maria!**  
**Adeus Portugal!**



**Monument to the Navigators**



[www.materdeitours.com](http://www.materdeitours.com)

**Toll Free: 800 515-2632**

# General Terms & Conditions

## General Terms & Conditions

Purchaser and/or traveler of this tour (you) acknowledges that Landa Cleary Travel Company, Inc. (d.b.a = doing business as Mater Dei Tours and Relevant Journeys) is acting as an independent intermediary (travel agent) between you and suppliers of goods and services, which are not directly supplied by Landa Cleary Travel Co., Inc., such as air transportation, hotel accommodations, ground and sea transportations, tours, tour guides, escorts, etc. and shall not be responsible for actions or omissions on the part of such suppliers, which may result in any loss, damage, delay or injury to you or your travel companions or group members. Landa Cleary Travel Company, Inc. and any religious or private organization contracting its services shall not be responsible for any injuries, damages or losses caused to any traveler in connection with social or labor unrest, mechanical or construction difficulties, diseases, local laws, climatic conditions, war, terrorist activities or any other actions omissions, or conditions outside their control.

By embarking upon his/her travel, the traveler(s) voluntarily assumes all the risks, and is advised to obtain appropriate insurance coverage against them. Your booking shall constitute a consent to the above and engaging the company, acknowledges these conditions and agrees to hold the company blameless in making the arrangements of his/her behalf, and agrees that restitution or damages, if any are claimed, shall be sought directly from the suppliers.

**Deposits:** A deposit of \$500 per person is required to secure your space to Landa Cleary Travel Company, Inc. **Deposits will be refunded in the event the tour does not meet the minimum quorum necessary to make the trip possible.** If you use a credit card as payment, you agree that if any cancellation penalties are due, Landa Cleary Travel Co., Inc. is authorized to charge the penalties to your credit card above.

**Final Payments:** Full payment must be made no later than **100 days** prior to departure unless otherwise stated. Payments may be made by check, Visa or MasterCard. If payment is not received as scheduled, your reservation may be automatically canceled and your deposit payment becomes forfeit. If you use a credit card as payment, for your convenience, you may opt to have Landa Cleary Travel Co., Inc. charge your balance to the same authorized credit card on the registration form by simply calling us with your verbal authorization.

**Tour Membership:** To ensure a positive experience, the Landa Cleary Travel Co., Inc. reserves the right to reject any client whose conduct is incompatible with the interest of the group. Landa Cleary Travel Co., Inc. is not responsible for lost persons and for the expenses incurred while being lost. Each traveler assumes responsibility for staying with the group.

**Cancellations:** All cancellations must be received in writing to our company prior to tour departure during normal business hours (9:00am to 5:00pm CST, Mondays through Fridays). All Cancellations are subject to the following per person penalties prior to departure:

- 95 days or prior \$300.00
- 94 to 65 days 50% of tour
- 64 to 35 days 75% of tour
- 34 to 0 days No Refunds

No refund can be made for non-refundable airfare.

**Travelers with Special Needs:** Passengers who require attention must advise the tour operator at the time of booking. A qualified and physically able companion must accompany travelers who need such assistance and must assume full responsibility for their well being. Coaches are not equipped with wheelchair accessible ramps, therefore all tour members must be able to mount 3 to 5 steps into the coach. **Participants should expect to walk between 1 and 3 miles per day.** Walking surfaces may at times be uneven. Landa Cleary Travel Co., Inc. is not responsible for denial of service by any suppliers.

**Young Travelers:** Travelers who are less than 18 years old on the departure date must be accompanied by an adult and must share the adult's accommodations. If a child will be traveling with adults other than the parents or with only one parent, it is highly recommended that a notarized letter be written by the parents or non-traveling parent granting authorization to travel, including the dates of travel. We suggest that you also contact the appropriate consulate and airlines because they may have additional requirements.

**Air Transportation:** We have selected airlines that are most suitable with land arrangements. All fares are subject to government approval and are subject to change without notice. Airfares are guaranteed once they have been paid in full and ticketed. Name changes required after tickets have been issued are subject to cancellation and re-ticketing at a higher fare or subject to change fees. Some airlines do not allow you to earn frequent flier miles for group bookings.

**Airline Seating:** Passengers who require specific seating due to medical conditions need to obtain Doctor's Orders so the airlines have proof of the condition and may accommodate the order. Passengers who desire a specific non-medical related seat are requested to contact the airline directly 30 days prior to departure for preferred seating. Group seating is solely under control of the airline. Group seating is solely under control of the airline.

**Voluntary changes to itinerary:** Independent voluntary changes to an individual passenger's itinerary are usually not permitted by most of our tour suppliers. Some exceptions may be granted in a case-by-case basis. If passenger purchased a land only package, they are free to plan their own itinerary before or after the trip (read Land Only bookings for restrictions). All change requests must be made prior to 45 days before departure.

**Not Included:** All items of a personal nature (room service, beverages, telephone charges, laundry, etc) and meals not specified on the tour itinerary are not included and must be paid by the passenger.

**Accommodations and Itinerary:** Land arrangements are provided as described in the tour program. The tour company reserves the right to change or substitute (1) hotels for accommodations in similar categories (2) or features of the itinerary in order to accommodate changes in the schedule.

**Meals:** Meals are provided as specified in the tour program. If you require special meals due to dietary restrictions, we must receive written details of your requirements at the time of booking.

**Passports:** Obtaining a passport is the sole responsibility of the passenger. Passports must be current and valid beyond the dates of travel. **Your airline ticket name must match your passport name or you may be denied boarding the airplane.** Passengers who are denied boarding due to discrepancies between ticket and passport names or because of expired passports accept full responsibility and are subject to the cancellation terms of the tour. Some countries such as Israel require that your passport be valid 6 months beyond your travel dates.

**Smoking:** Smoking is not allowed on the motor-coach but frequent stops are made throughout the day.

**Tips:** Gratuities for baggage, hotel and restaurants detailed in the itinerary are included. **Gratuities for Tour Guides, Local Guides and Motor-coach Drivers are not included – please see your final documents for recommendations on tipping.**

**Total Group Cancellation:** If it becomes necessary to cancel an entire tour prior to departure, Landa Cleary Travel Co., Inc. will offer the next available date or will make a full refund of money paid. Landa Cleary Travel Co., Inc. cannot accept responsibility for any additional costs or fees relating to such a tour booking or for any cancellation penalties due to non-refundable airfares, unless ticket is purchased as part of our negotiated group booking.

**Land Only Bookings:** Passenger(s) who desire to book their own airfare do at their own risk. Land only passengers are responsible for connecting with the group at the hotel. Passenger(s) accept all responsibility for costs incurred due to misconnections with the group. Landa Cleary Travel Co., Inc. cannot accept responsibility for any additional costs or fees relating to such a tour booking or for any cancellation penalties due to non-refundable airfares, unless ticket is purchased as part of our negotiated group booking.

**Luggage:** Handling of one piece of luggage per person is included in the cost of all tours. Luggage is carried at owner's risk throughout the tour (insurance suggested). Hand baggage and small articles such as coats, umbrellas or cameras are entirely in the care of the passenger. Size and weight limitations for carry-on and checked baggage vary from airline to airline and even according to destination, and are becoming more restrictive. Check your final documents for details of acceptable luggage dimensions and weight allowed on your tour. **All baggage and personal effects are at all times and in all circumstances at the risk of the passenger. Baggage insurance is recommended.**

**Validity:** Rates in this brochure are valid for the travel period stated on the brochure, and are quoted on a per person sharing twin/double room basis. All prices are show in U.S. Dollars and are calculated on currency rates and fares exiting on January 23, 2009. Landa Cleary Travel Co., Inc. reserves the right to alter prices at any time prior to departure and without prior notice due to currency exchange rates, taxes, fees or fuel surcharges increases.

Landa Cleary Travel Co., Inc. and all dba's are not responsible for misprints on the brochures as well as in Landacleary.com, Relevantjourneys.com and Materdeitours.com. Every effort is made to ensure brochure accuracy at the time of going to press, however Landa Cleary Travel Co., Inc. cannot be held responsible for printing or typographical errors, or errors arising from unforeseen circumstances. In the case of computer or human billing error we reserve the right to re-invoice passengers with correct billing.

**Travel Insurance:** Landa Cleary Travel Company, Inc. has automatically added travel insurance to your reservation in addition to your deposit or balance. You may choose to decline this option by checking the appropriate "decline insurance" box on the registration form. Pre-existing conditions can only be covered if premium payment is made within 15 days of your initial trip deposit. Landa Cleary Travel Company, Inc. uses Travel Guard, AIG insurance exclusively. **Travel Guard AIG Insurance does not cover general strikes in Israel and/or France.** Please ask for policy brochure for more details of coverage.

**For price plus taxes & fees information please see registration sheet.**

**Registration deadline:**

**September 7th, 2009\***

\* "First come first serve" basis.

Space may be sold out prior to deadline.  
Don't wait! Register NOW!

**Balance due: October 3rd, 2009**

AIR PROVIDED BY **IBERIA AIRLINES OF SPAIN**



P.O. Box 323, Waunakee, WI 53597-0323  
TEL. 608-849-4359  
or 1-800-515-2632

[www.materdeitours.com](http://www.materdeitours.com)  
[www.relevantjourneys.com](http://www.relevantjourneys.com)  
[www.truecatholicpilgrimages.com](http://www.truecatholicpilgrimages.com)